



Jorid's Christmas Heart

Mittens

Design: Jorid Linvik

This pattern was a gift from Jorid's Pattern Shop (www.joridweb.com)

The pattern is distributed in PDF format, and may not be distributed, published or sold without the express permission of the owner.

© 2013 Jorid Kunst og Design

Info:

Suggested yarn: The mittens on the photos are knitted in Alpa from Trysilgarn, White, dark violet and pink.

1 ball of each color.

Other suggested yarns:

Daletta from Dalegarn and Finullgarn from Rauma.

Or you can use a yarn of any brand that matches about 26 sts = 4 in (Fingering, 4 ply)

Gauge for the mittens (knitted in pattern):

30 sts. / 30 rows = 4 inch

This will give a mitten measuring about 10.5 cm across.

Needles:

2½ (US 1½) and 3 (US 2½), sets of 5 double-pointed

Size: Ladie's size

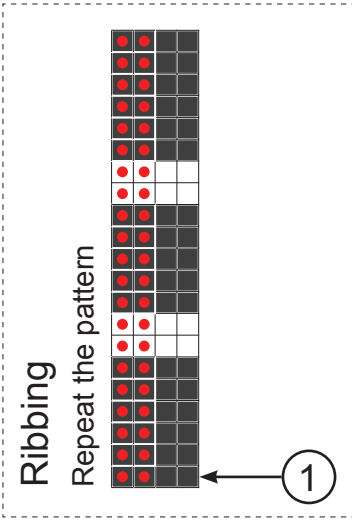


Instructions:

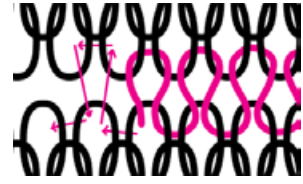
1. Cast on 56 sts. (stitches) on needles size 2½ (US 1½) with the dark color, distribute on 4 needles and join in a ring. Knit the ribbing, see chart on page 3.
2. Continue from the large chart on page 3. Switch to needles size 3 (US 2½) Increase to 60 sts. as shown in the chart, distribute the sts. with 15 on each needle. Notice that both sides of the mitten are alike, except the thumb opening. (See also the pattern repeat on page 4)
3. Increase 1 st. in side. The first st. of following rows is a purl st.- to avoid offset in the pattern in side.
4. Thumb opening (marked by a red line).
Knit these 11 sts. with a loose end of different colored waste yarn, return the waste yarn sts. to the left hand needle and continue from the chart. Remember to knit one left and one right mitten...
5. Bind off the purl stitch.
6. Start decreases.
7. Kitchener together the 7 sts. on the front side with the 7 sts. on the back side.
8. Thumb: (Page 4) Needles size 3 (US 2½). Place 11 sts. above the opening onto one needle, and 11 sts. below the opening onto another needle. Pick up 2 sts. on either side as shown in the chart, giving 26 sts. altogether. Distribute the sts. on 4 needles.
9. Start decreases.
10. Cut the threads, pull one thread end through the last 6 sts.

Fasten all loose ends. Close gaps (if any) by the thumb with some loose ends.

	Dark color	Light color	White	Key to chart
				Knit stitch
				Purl stitch
Decreases				Knit 2 together
				Slip 1, knit 1, pass slipped stitch over
				Pick up / increase 1 stitch
				Right thumb opening
				Left thumb opening



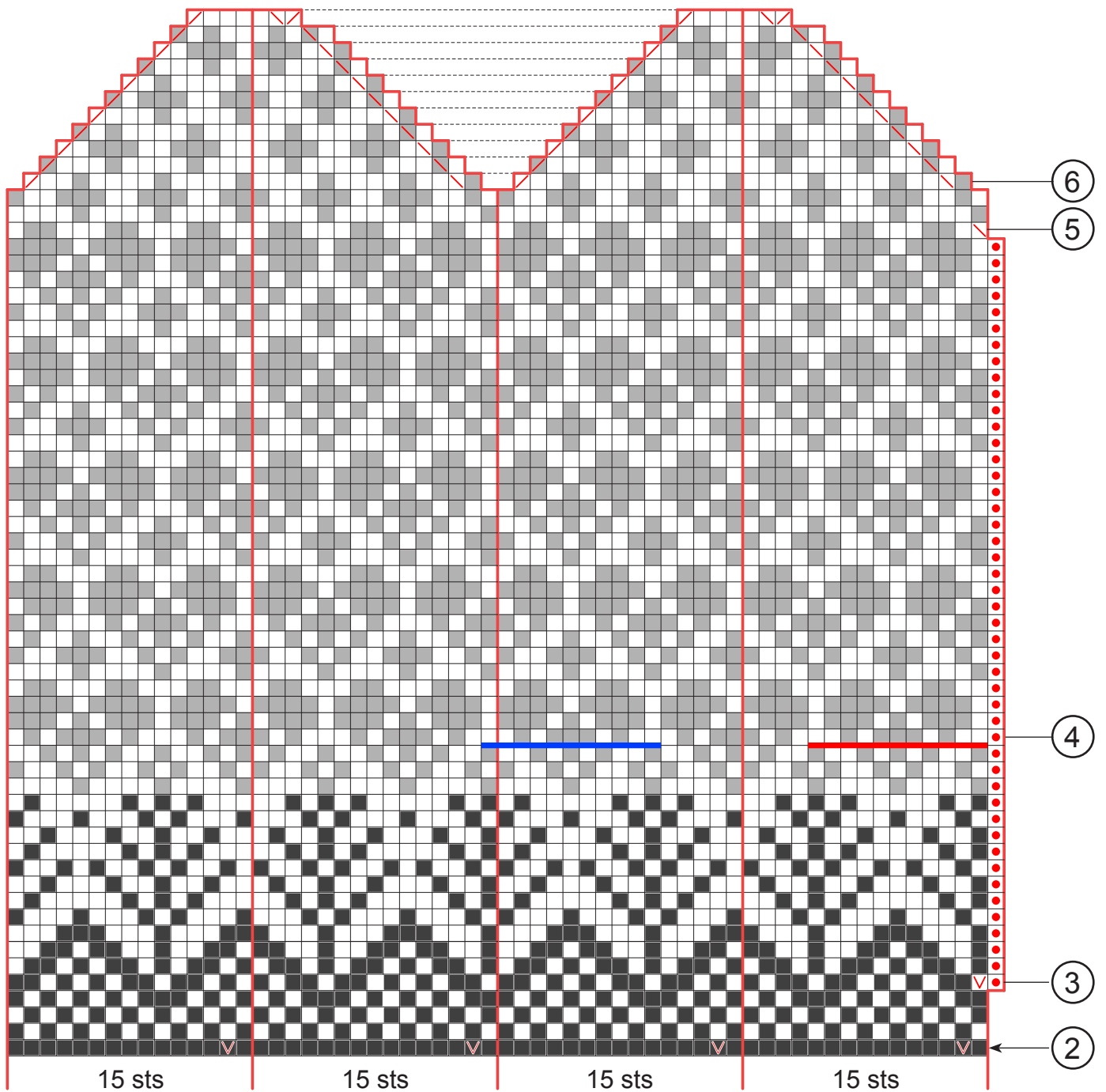
Keep the position of the two colors of yarn the same in relation to each other throughout the work. The pattern will show up best if the pattern color always runs below the background color (white) on the back of your work. If you are working with one color in each hand, this means you should keep the pattern color in your left hand and the background color in your right.

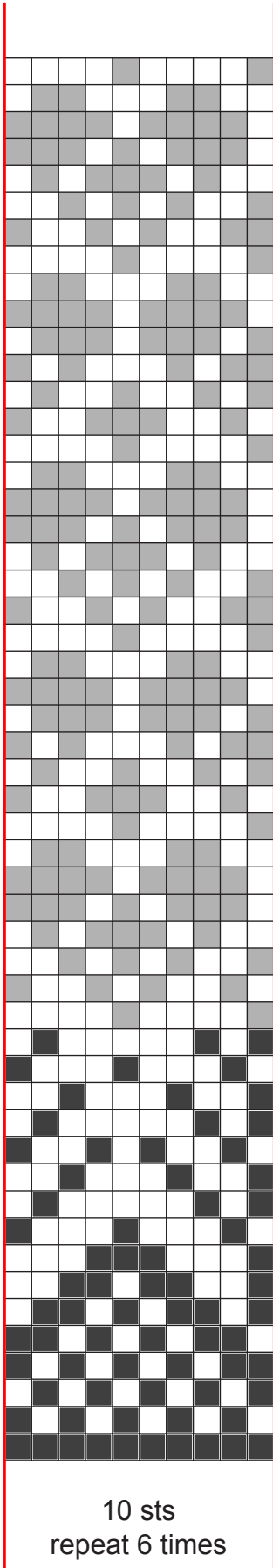


Kitch stitches

Mitten chart

7





Pattern repeat mitten

